

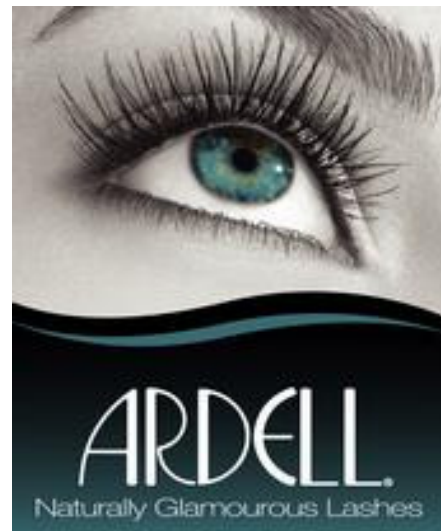
ARDELL DURALASH "FLARES" SEMI-PERMANENT EYELASH EXTENSIONS

Who doesn't want longer, thicker, perfectly curled eyelashes?
From a natural looking subtle enhancement to fun and flirty to bold and dramatic,
give your clients the lashes of their dreams!
This class teaches application of the **small clusters or flares** of lashes.

*Class fee \$100 and includes a starter kit.
Participants will receive 10% off all purchases that same day.*

VICTORIA class at
#6 - 601 Boleskine Rd & Tennyson
Tuesday February 7, 2012 8:30am – 12:30

NANAIMO class at 3035 B Barons Rd & Norwell
Monday February 15, 2012 8:30am – 12:30



The class will cover preparation, application, fills, removal and home care.

You must supply a model who is not currently wearing lash extensions.
Your model must arrive 2 hours *after* class start time.

To register or for questions please contact JD (Jeni Deveaux) at Nova Beauty Victoria

by phone:

250-382-3636 or toll free 1-800-663-6103 extension 206

by email:

education@novabeauty.ca

novabeauty 