

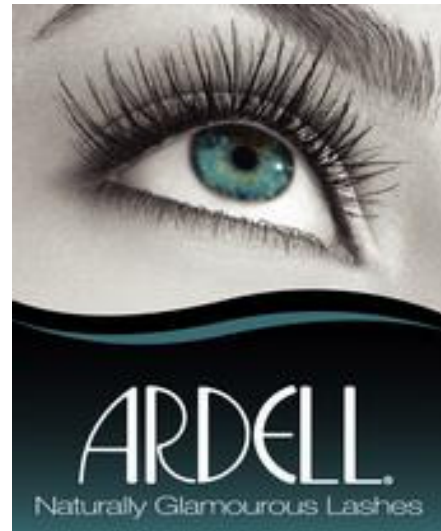
# Ardell DuraLash "Singles" Semi-Permanent Eyelash Extensions

Who doesn't want longer, thicker, perfectly curled eyelashes?  
From a natural looking subtle enhancement to fun and flirty to bold and dramatic,  
give your clients the lashes of their dreams!  
This class teaches application of the **individual single** lashes.

*Class fee \$100 and includes a starter kit.  
Participants will receive 10% off all purchases that same day.*

**VICTORIA** class at  
#6 - 601 Boleskine Rd & Tennyson  
Tuesday March 6, 2012 8:30am – 12:30

**NANAIMO** class at 3035 B Barons Rd & Norwell  
Monday March 12, 2012 8:30am – 12:30



The class will cover preparation, application, fills, removal and home care.

You must supply a model who is not currently wearing lash extensions.  
Your model must arrive 2 hours *after* class start time.

**To register or for questions please contact JD (Jeni Deveaux) at Nova Beauty Victoria**

by phone:

**250-382-3636 or toll free 1-800-663-6103 extension 206**

by email:

**[education@novabeauty.ca](mailto:education@novabeauty.ca)**

**novabeauty** 